

Part Number Guide

T-M-FF.FFFM-PBW-Pole-S

T (Type型号): F=UM - 1 Filter

M (Mode of Operation振荡模式): F=Fundamental T=Third Overtone, etc

F (Frequency标称频率): Normal - 5 digitals of Frequency, e.g. 10.000M

Special - All digitals of Frequency, e.g. 13.225625M

PBW (Pass Bandwidth通带宽度): 08= $\pm 3.75\text{KHz}$ 15= $\pm 7.50\text{KHz}$ 09= $\pm 4.50\text{KHz}$

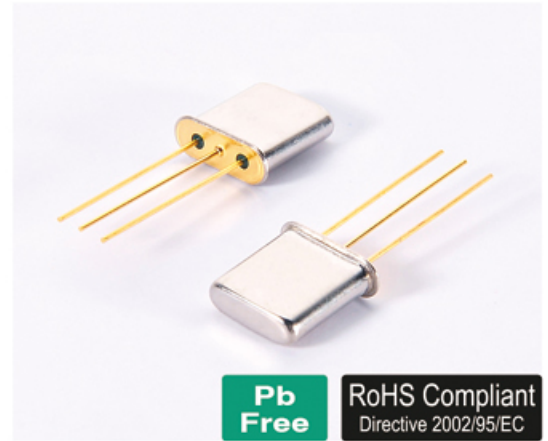
20= $\pm 10.00\text{KHz}$ 12= $\pm 6.00\text{KHz}$ 30= $\pm 15.00\text{KHz}$

Pole (极点): A=2 Poles B=4 Poles

S (Special Requirement特殊要求)

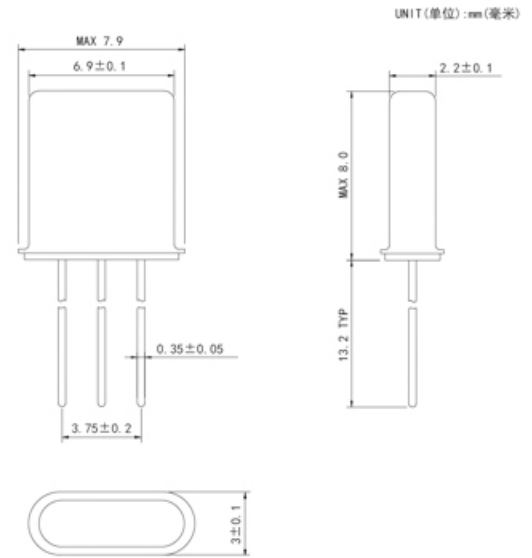
Electrical Specifications 电气参数

型号	Holder Type	UM-1 Filter
标称频率	Nominal Frequency	10.7MHz 16.9MHz 21.4MHz 21.6MHz 21.7MHz 44.85MHz 45MHz
通带宽度	Pass Band Width	$\pm 3.75\text{KHz}$ $\pm 4.50\text{KHz}$ $\pm 6.00\text{KHz}$ $\pm 7.50\text{KHz}$ $\pm 10.00\text{KHz}$ $\pm 15.00\text{KHz}$ (at-3db)
阻带宽度	Stop Band Width	Determined by customer
带内波动	Ripple	0.5db 1.0db
插入损耗	Insertion Loss	1.0db 2.0db
终端阻抗	Terminal Impedance	Determined by customer
工作温度范围	Operating Temperature	-20°C to +70°C
极点	Pole	2Poles/4Poles



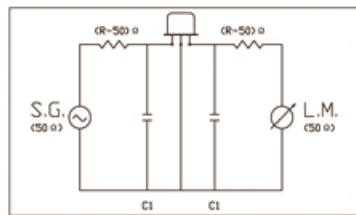
Pb Free **RoHS Compliant**
Directive 2002/95/EC

Mechanical Dimensions 外型尺寸

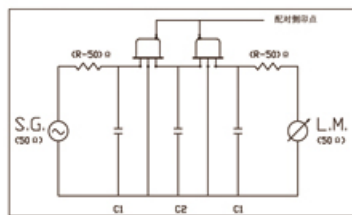


Test Circuit 测试电路

Test Circuit (2 Poles) 测试电路 (2引脚)



Test Circuit (4 Poles) 测试电路 (4引脚)



Reflow Condition 回流焊条件

