

2.5×2.0 SMD VCTCXO

Part Number Guide

T-V-FF.FFFM-FT-FS-OT-OP-S

T (Type型号): TD=2.5x2.0 SMD TCXO VTD=2.5x2.0 SMD VCTCXO

V (Input Voltage输入电压): 1.8=1.8V 2.8=2.8V, 3.0=3.0V, etc

F (Frequency标称频率): Normal - 5 digitals of Frequency, e.g. 13.000M, 20.000M

Special - All digitals of Frequency, e.g. 16.367667M

FT (Frequency Tolerance 室温频差): A=0.5ppm, B=1ppm, C=1.5ppm, D=2ppm, E=2.5ppm, etc

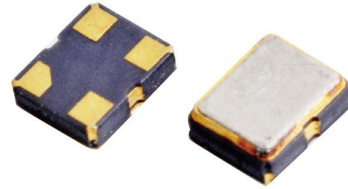
FS (Frequency Stability 温度频差): A=0.5ppm, B=1ppm, C=1.5ppm, D=2ppm, E=2.5ppm, etc

OT (Operating Temperature工作温度): A=0°C to +50°C, B=0°C to +70°C, C=-20°C to +70°C

D=-20°C to +75°C, E=-30°C to +75°C, F=-30°C to +85°C, G=-40°C to +85°C

OP (Output Load输出): A=Clipped sinewave, B=Square HCMOS

S (Special Requirement特殊要求)



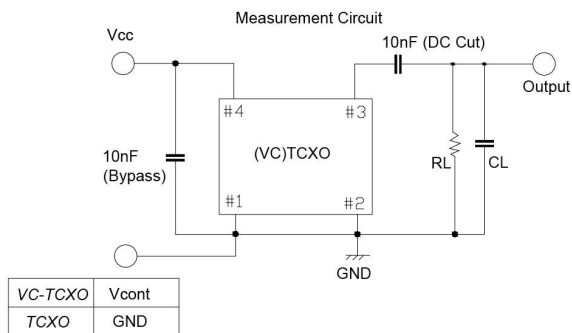
Pb Free

RoHS Compliant
Directive 2002/95/EC

Electrical Specifications 电气参数

型号	Holder Type	2.5 × 2.0 SMD VCTCXO
频率范围	Frequency Range	10.000M to 52.000M
典型频点	Typical Frequency	10.000M/16.367667M/26.000M
输入电压	Supply Voltage	1.8V to 3.3V
工作温度范围	Operating Temperature Range	-10°C ~ +60°C to -40°C ~ +85°C
储存温度范围	Storage Temperature Range	-40°C to +85°C
负载	Load	(10KΩ // 10pF) ±10%
频率偏差	Frequency Tolerance	1PPM, 2.5PPM Max
频率稳定度	Frequency Stability	0.5PPM, 2.5PPM Max
频率-电压稳定度	Vs. Supply Voltage	0.2PPM
频率-负载稳定度	Vs. Load	0.2PPM
老化	Aging	1PPM
消耗电流	Current Consumption	3mA Max
电压控制范围 (VCTCXO)	Voltage control range (VCTCXO)	±10PPM
启振时间	Start Time	3ms Max
相位噪声	Phase Noise	100Hz offset typical -115dBc/Hz 1KHz offset typical -130dBc/Hz 10KHz offset typical -145dBc/Hz

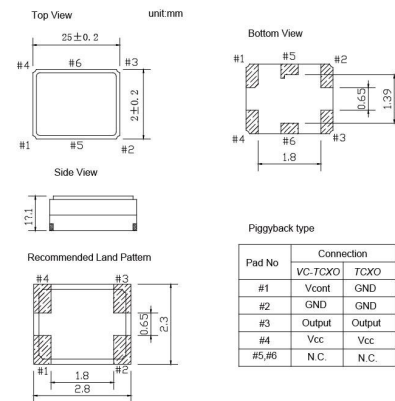
Test Circuit 测试电路



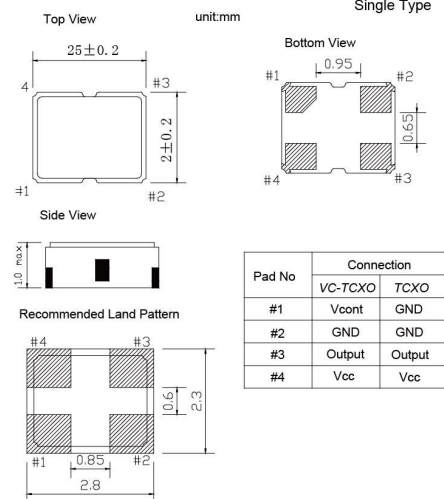
Note
Please connect a bypass capacitor closely to VCC PAD.
Load capacitance (CL) includes probe and test board capacitance.

Mechanical Dimensions 外型尺寸

Piggyback Type



Single Type



Reflow Condition 回流焊条件

