

## Part Number Guide

T-V-FF.FFFM-OT-TR-S

T (Type 型号): TC=3.2×2.5 SMD VCTCXO

V (Input Voltage 输入电压): 3=3.3V, 5=5.0V, etc

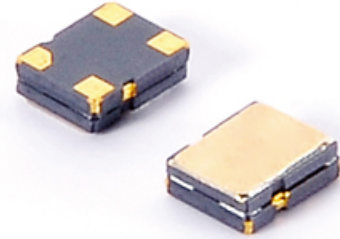
F (Frequency 标称频率): Normal - 5 digitals of Frequency, e.g. 8.0000M, 12.000M

Special - All digitals of Frequency, e.g. 13.225625M

OT (Operating Temperature 工作温度): 0070=0°C to +70°C 4085=-40°C to +85°C, etc

TR (Tape and Reel 编带)

S (Special Requirement 特殊要求)

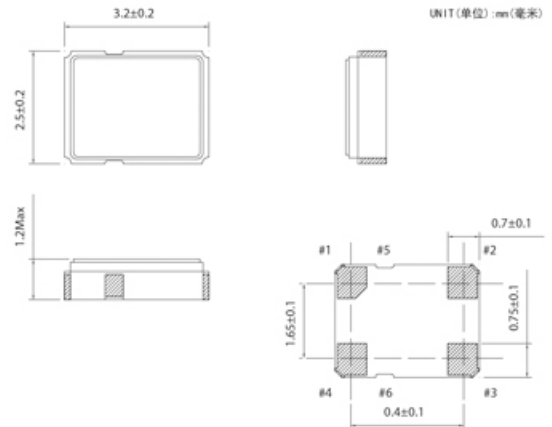


## Electrical Specifications 电气参数

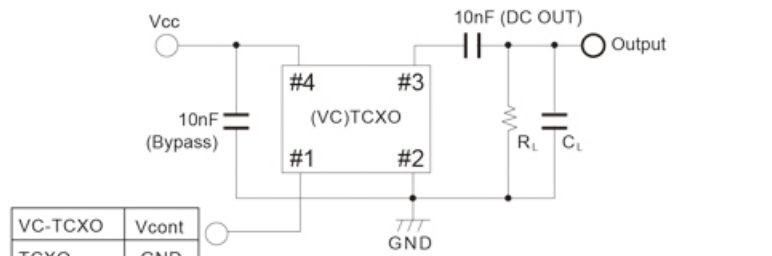
型号	Holder Type	3.2×2.5 SMD VCTCXO
频率范围	Frequency Range	8.0000MHz to 52.000MHz
典型频点	Typical Frequency	13.000MHz/19.200MHz/19.680MHz/26.000MHz
输入电压	Supply Voltage (VCC)	+1.68V to +3.3V
工作温度范围	Operating Temperature Range	-10°C ~ +60°C to -40°C ~ +85°C
储存温度范围	Storage Temperature Range	-40°C ~ +85°C / -55°C ~ +125°C
负载	Load	(10 kΩ // 10 pF) ± 10 %
频率偏差	Frequency Tolerance	1.0, 2.5ppm Max
频率稳定度	Frequency Stability	0.5, 1.0, 2.5ppm Max
	vs. Supply Voltage	± 0.1ppm Max (VCC ± 5%)
	vs. Load	± 0.2ppm Max (10kΩ // 10pF ± 10% each)
老化	Aging	± 1ppm/year Max
消耗电流	Current Consumption	2.0mA Max
相位噪声	Phase Noise	
	100Hz offset typical	-115dBc/Hz Max
	1KHz offset typical	-125dBc/Hz Max
	10KHz offset typical	-135dBc/Hz Max



## Mechanical Dimensions 外型尺寸



## Test Circuit 测试电路



**Note**  
Please connect a bypass capacitor closely to VCC Pad.  
Load Capacitance (CL) includes probe and test board capacitance.

## Reflow Condition 回流焊条件

